

Clinical Image

Open Access, Volume 3

Lung cancer choroid metastasis***Corresponding Author: Fatma Selen Ala**

Department of Chest Disease, Ondokuz Mayıs University, Samsun, Turkey

Tel: 05079903897; Email: selennala@gmail.com

Received: Mar 03, 2022

Accepted: Apr 12, 2022

Published: Apr 19, 2022

Archived: www.jcimcr.org

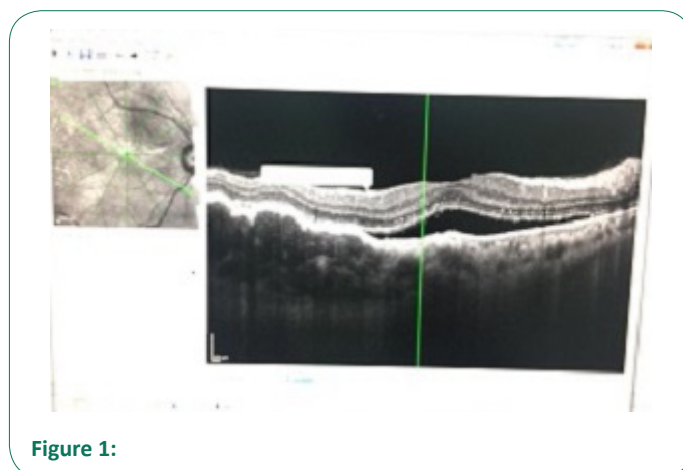
Copyright: © Fatma SA (2022).

DOI: www.doi.org/10.52768/2766-7820/1798

Clinical image description

The majority of eye cancers develop from metastasis of other organs metastasis to the eye. Although it is thought to be quite rare, its frequency has reported to have increased in recent years. Breast cancer in women is more often responsible for intraocular metastases than lung cancer in men. The most common area where eye metastasis is seen is the uveal system. Choroid involvement; it is more common than iris and ciliary body. The number of studies evaluating the incidence of choroid metastasis due to lung cancer is small, and the incidence of choroid metastasis ranges between 0.1-7%. Lung cancer, which metastasizes most frequently into the eye, is reported to be the histopathological type of adeno cancer in 41%.

In this case, after the completion of chemotherapy for lung cancer, a patient who developed eye metastasis during follow-up did not respond to treatment and whose symptoms were improved with radiotherapy, was presented.

**Figure 1:****Citation:** Fatma SA. Lung cancer choroid metastasis. J Clin Images Med Case Rep. 2022; 3(4): 1798.