

Clinical Image

Open Access, Volume 5

Full-thickness macular hole recurrence after spontaneous closure**James Pietris^{1,2*}; Surbhi Agrawal²; Jagjit Gilhotra²**¹School of Medicine, University of Adelaide, Adelaide SA 5000, Australia.²Department of Ophthalmology, Royal Adelaide Hospital, Adelaide SA 5000 Australia.***Corresponding Author: James Pietris**School of Medicine, University of Adelaide,
Adelaide SA 5000, Australia.

Tel: 0466 987 688; Email: james.pietris@gmail.com

Received: Jun 04, 2024

Accepted: Jul 09, 2024

Published: Jul 16, 2024

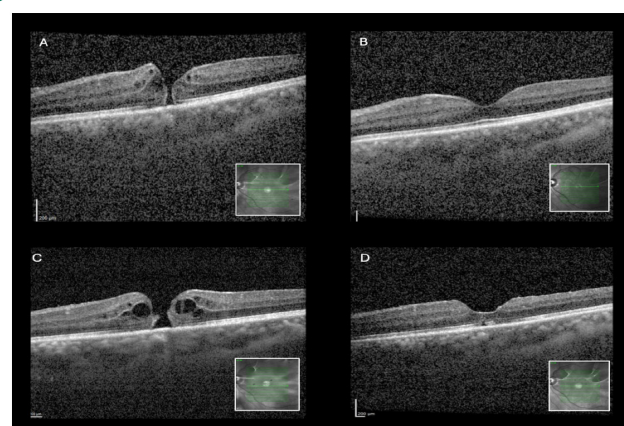
Archived: www.jcimcr.org

Copyright: © Pietris J (2024).

DOI: www.doi.org/10.52768/2766-7820/3170

Description

A 47-year-old female presented with reduced left visual acuity of 6/18 and metamorphopsia. She was found to have a full-thickness central macular hole (Figure 1A). Surgical repair was planned, however one week prior to scheduled surgery the hole had spontaneously closed (Figure 1B). This was accompanied by an improvement in visual acuity to 6/9. Four months later, the patient's vision deteriorated to 6/24. Optical coherence tomography revealed the macular hole had re-opened (Figure 1C). The patient underwent left pars plana vitrectomy, membrane peel, and C3F8 endotamponade and the hole was successfully closed (Figure 1D). To date there has been no further recurrence.

**Figure 1:** Clinical image.