

Clinical Image

Open Access, Volume 5

Angelchik device migration***Corresponding Author: Griffin Bryant**

Texas Christian University, USA.

Tel: 2147944484; Email: griffin.bryant@tcu.edu

Received: Aug 01, 2024

Accepted: Aug 15, 2024

Published: Aug 22, 2024

Archived: www.jcimcr.org

Copyright: © Bryant G (2024).

DOI: www.doi.org/10.52768/2766-7820/3218

Description

A 71-year-old female presented with a 2-week history of increasing dysphagia, vomiting, and weight loss. She had a hiatal hernia repaired with Angelchik device implantation in 1984. CT imaging showed the device had migrated to the portal system. The device was medial to the intrahepatic IVC, posterior to the common hepatic artery, and superior to the portal vein. An exploratory laparotomy was performed, and the device was extracted without complication.

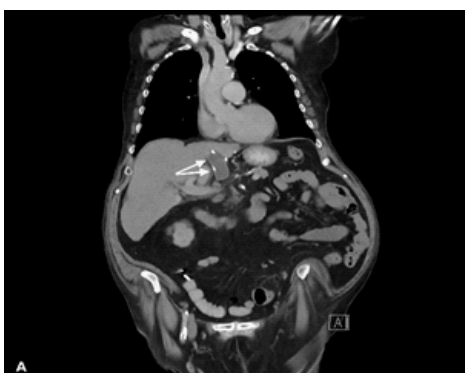


Figure 1: Coronal cross section of the Angelchik device within the abdomen.

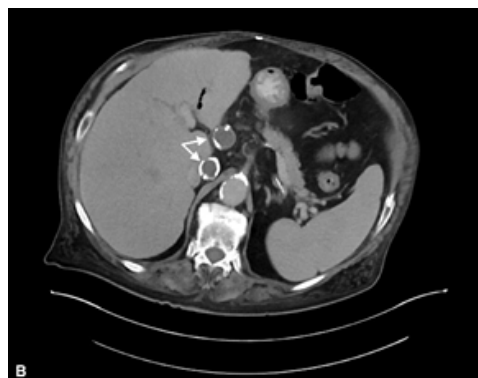


Figure 2: Transverse cross section of the Angelchik device within the abdomen.



Figure 3: Angelchik device upon removal.