

Clinical Image

Open Access, Volume 6

The CT and MRI in the non coronary sinus aneurysm

***Corresponding Author: Facundo Yamil Caran**

Department of Radiology, Instituto de Cardiología
de Corrientes "Juana Francisca Cabral", Cordoba
1259, Corrientes Capital, Argentina.

Tel: +54-3772465841;

Email: facucaran@gmail.com

Received: Apr 30, 2025

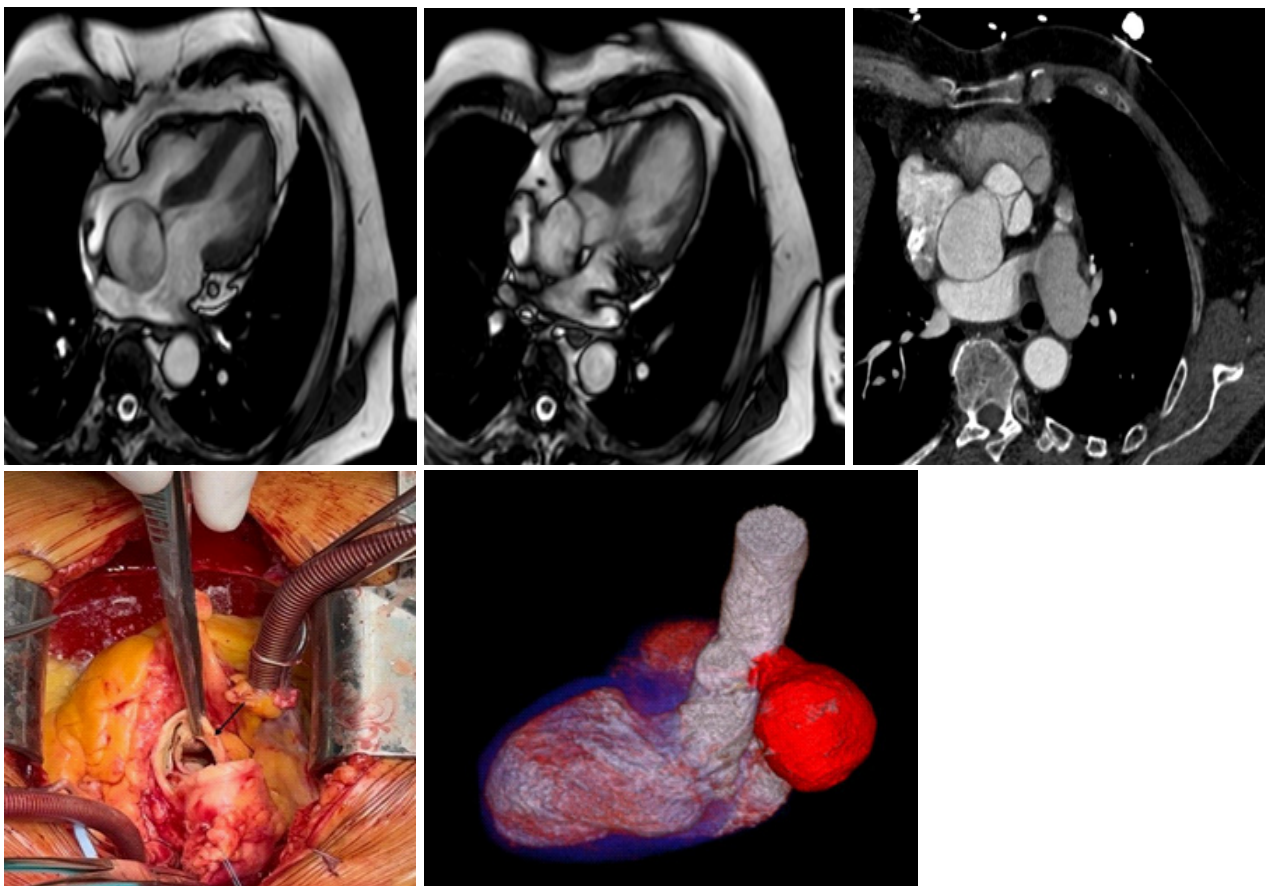
Accepted: May 20, 2025

Published: May 27, 2025

Archived: www.jcimcr.org

Copyright: © Caran FY (2025).

DOI: [www.doi.org/10.52768/2766-7820/3608](https://doi.org/10.52768/2766-7820/3608)



Description

Coronary sinus aneurysms are a rare entity, usually congenital, although they can be associated with conditions such as infective endocarditis and Behçet's disease. They most frequently originate in the right coronary sinus (70%–90%) and rarely in the non-coronary sinus and may be asymptomatic until complications develop. Complications include rupture, arrhythmias, outflow tract obstruction, and aortogenic embolism. Surgical treatment is the method of choice, with repair by direct closure or prosthetic patch placement depending on the size of the aneurysm. We present a case of a non-coronary sinus aneurysm in a 78-year-old male patient, diagnosed by cardiac magnetic resonance imaging (MRI) and cardiac computed tomography (CT) angiography. The patient was treated with Dacron patch aortoplasty, with good clinical outcome. This case highlights the importance of imaging methods in the diagnosis and treatment of coronary sinus aneurysms, a rare but potentially serious condition.